

MQv9 REST API

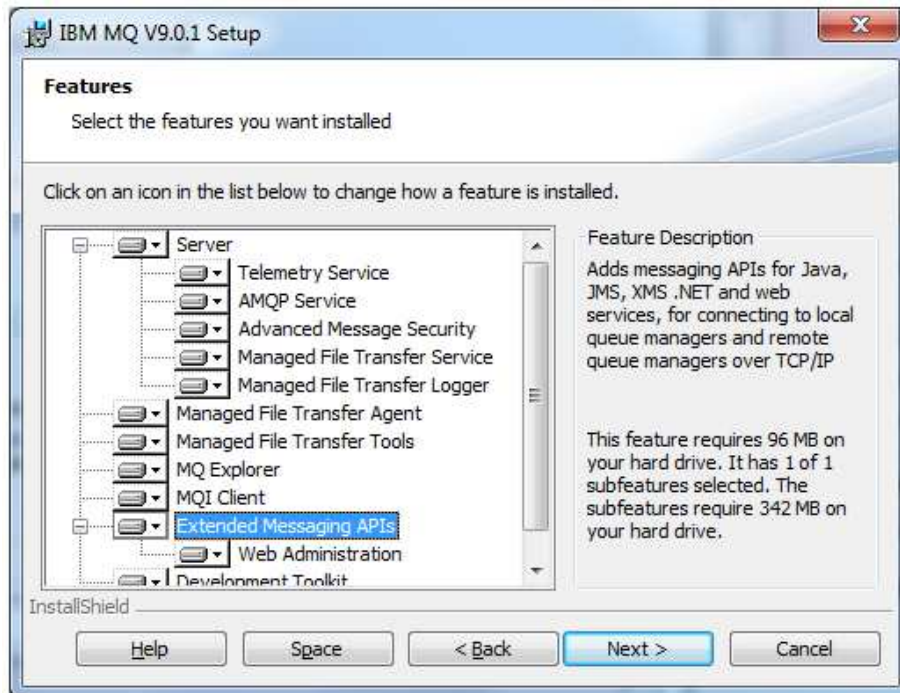
Carl Farkas

IBM Europe zHybrid Cloud consultant

farkas@fr.ibm.com

1. Installation

- **Be sure to include Web admin when you install MQ**



- **Note: for z/OS, there is an additional SUBSET JMS9018 & JMS9016 to use with SMP/E**

2. Configuration

1. For info.... Note that the REST interface runs as a Liberty application
2. Edit C:\Program Files\IBM\WebSphere MQ\Data\web\installations\InstV901\servers\mqweb\mqwebuser.xml.
3. Add REST API enablement line:

```
<server>
  :
  <!-- Carl adding this variable for HTTP Admin interface enable -->
  <variable name="mqRestAutostart" value="true" />
  :
</server>
```

3. Startup

```
c:\Junk> cd \mqv901\bin
```

```
c:\MQv901\bin> strmqweb  
Starting server mqweb.  
Server mqweb started.
```

```
c:\MQv901\bin> endmqweb  
Stopping server mqweb.  
Server mqweb stopped.
```

- In case of trouble, check **C:\Program Files\IBM\WebSphere MQ\Data\web\installations\InstV901\servers\mqweb\logs\messages.log**

4. Test

- Quick test by Browsing to <https://localhost:9443/ibmmq/rest/v1/installation>

The image displays two screenshots of the RESTClient browser extension. The left screenshot shows the RESTClient interface with the URL `https://localhost:9443/ibmmq/rest/v1/inst` and a JSON response: `{\"installation\": [{\"name\": \"InstV901\", \"platform\": \"windows\", \"version\": \"9.0.1.0\"}]}`. The right screenshot shows the RESTClient interface with the URL `https://localhost:9443/ibmmq/rest/v1/qmgr/CarlQM?attributes=*` and a detailed JSON response for the 'CarlQM' queue manager.

```
1. {
2.   "qmgr":
3.   [
4.     {
5.       "extended":
6.       {
7.         "installationName": "InstV901",
8.         "isDefaultQmgr": true,
9.         "permitStandby": "notPermitted"
10.      },
11.      "name": "CarlQM",
12.      "status": "running"
13.    }
14.  ]
15. }
```